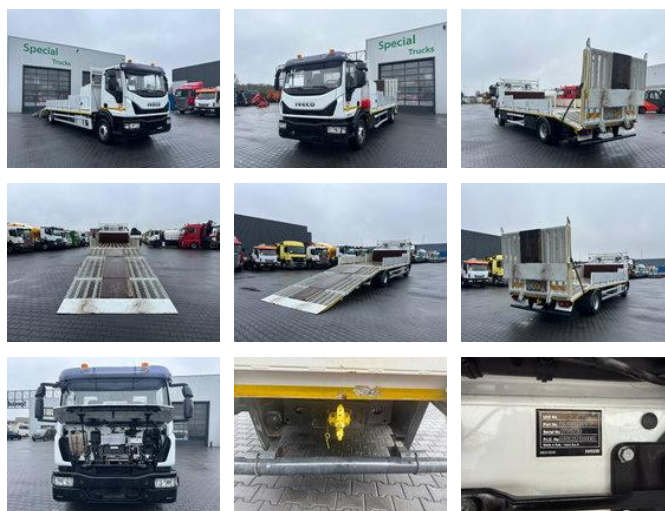


Iveco ML 160 210 E6 4x2 ACC Oprijwagen / Machine transporter (Only 89.210km !!)

General characteristics

| | |
|----------------------------|--------------|
| Brand | Iveco |
| Model | ML 160 |
| Subcategory | Loading ramp |
| Meter reading | 89.210km |
| Year of construction | 2019 |
| Date of first registration | 04-02-2019 |
| Condition | Used |
| General state | Very good |
| Fuel | Diesel |
| Emission class | Euro 6 |



Properties

| | |
|---------------|----------|
| Single weight | 8.146kg |
| Load capacity | 7.854kg |
| GVW | 16.000kg |

Iveco ML 160 210 E6 4x2 ACC Oprijwagen / Machine transporter (Only 89.210km !!)

Technical specifications

| | |
|--------------------|-----------|
| Number of axes | 2 |
| Axis configuration | 4x2 |
| Transmission | Automatic |
| Assets | 152kw |

Accessories

- Automatic
- Cabin
- Central doorlocking
- Air suspension system
- Air Suspension Seats
- Passenger seat
- Heated Mirrors
- Power steering
- Spotlight rear
- Heater
- Front window
- Rotating beacon
-
- Anti-lock braking system
- Leaf spring suspension
- Cruise control
- Toolbox
- Air suspension
- Fog lights
- Parabolic suspension
- PTO
- Radio/CD player
- Particulate filter
- Heavy duty engine brake
- Spotlights
- Visor